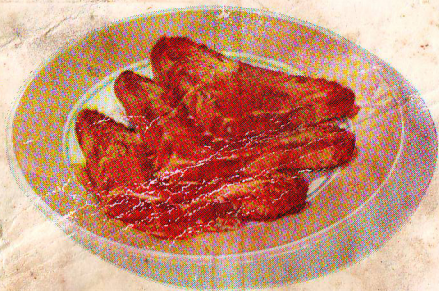

French Toast

1 egg
 $\frac{1}{2}$ cup milk

$\frac{1}{4}$ teaspoon salt
Towle's Log Cabin Syrup



BEAT egg, add milk and salt. Cut slices of bread in half and dip in the egg mixture. Fry in hot fat until crisp and brown. Drain on paper and serve with Towle's Log Cabin Syrup.